

These instructions are specifically designed for users with a serial number beginning with **ZZ** or **ZD**.

To download and install MapPro for a single PC, please follow the steps below:

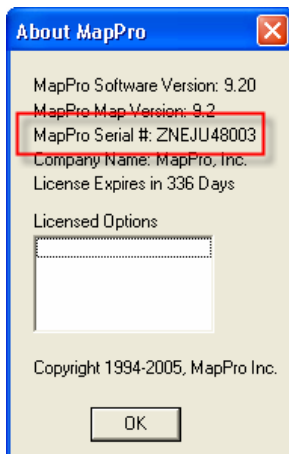
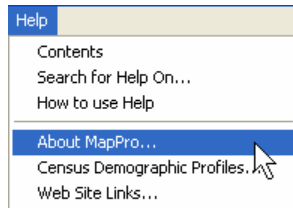
NOTE: NEW INSTALLATIONS please skip to **Step 6**

● SERIAL NUMBER


1. Before installing a new version of MapPro, you need to have your current serial number. Go to the desktop and double-click on the **MapPro** globe icon



2. From the pull-down menu at the top, select **Help>About MapPro...**

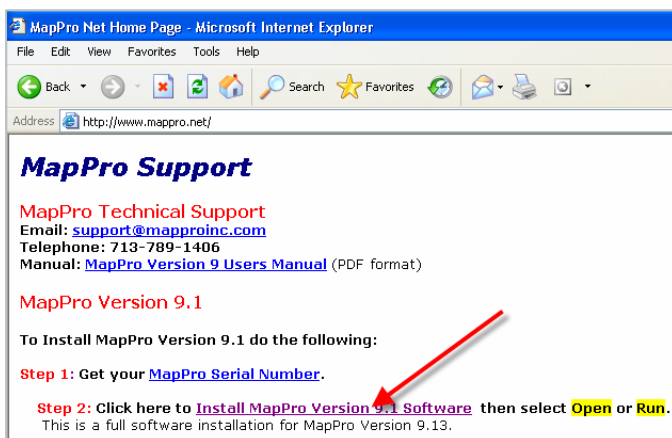


3. Write down your MapPro Serial #, which you will need to enter during the installation process.

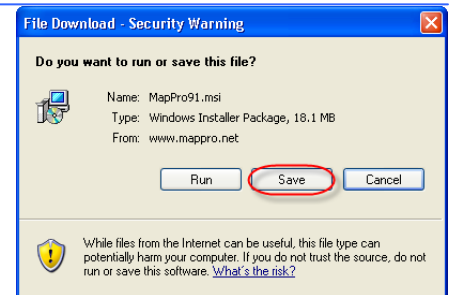
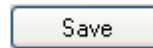
4. Click 
5. Close MapPro

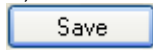
● DOWNLOAD

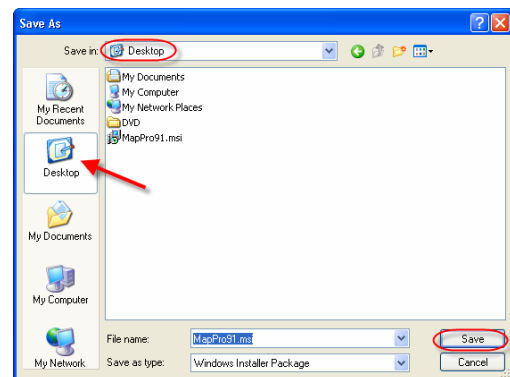
6. Open Internet Explorer and go to www.mappro.net
7. On the MapPro Support webpage, go to **Step 2** and click on the link **Install MapPro Version 9.x Software**



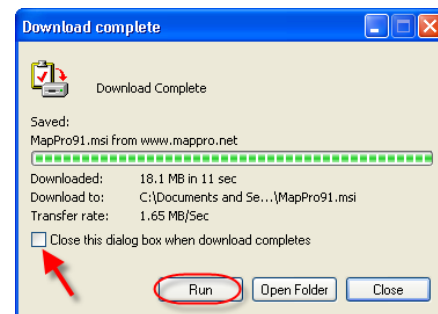
8. When prompted, select



9. In the **Save As** window, click the **Desktop** icon on the left, then click the  button



10. On the progress window, make sure the box is **UNCHECKED** for **Close this dialog...**



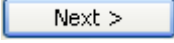
● INSTALL

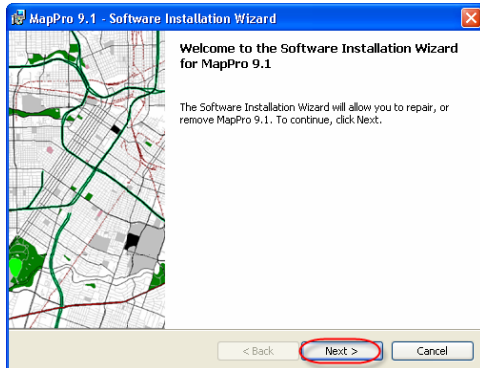
11. When the download is complete, click  or Open

12. Click 

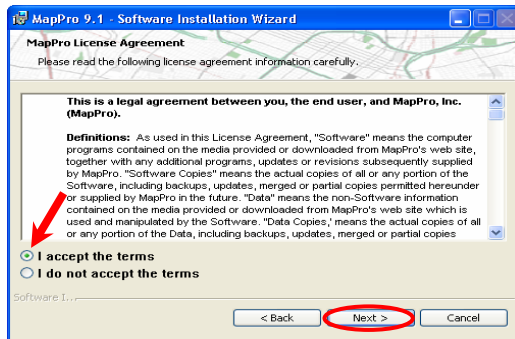
again if you get a **Security Warning** to run the software.



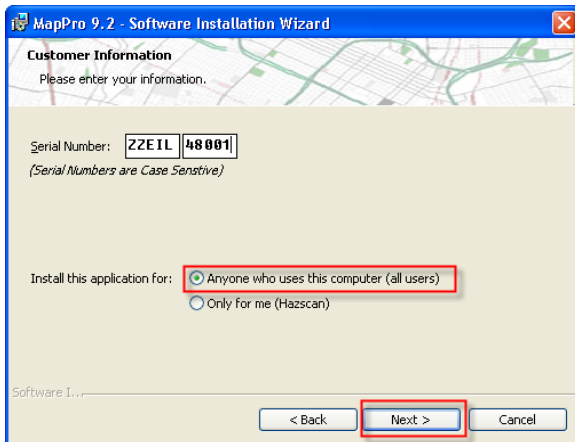
13. Click  on the first Installation Wizard window

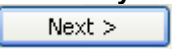


14. Select **I accept the terms** then click 

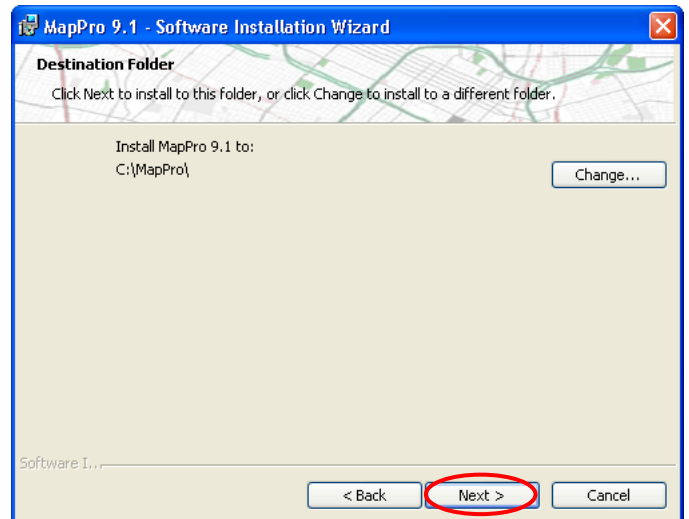



15. Fill in your Serial Number

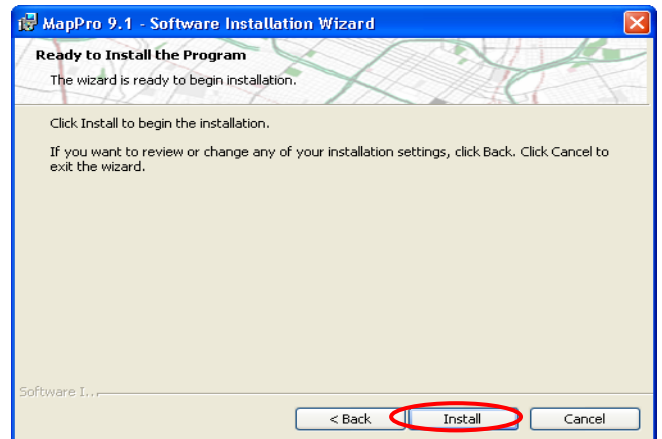


16. At the bottom of the Serial Number window, leave it selected for **Anyone who uses this computer** then click 

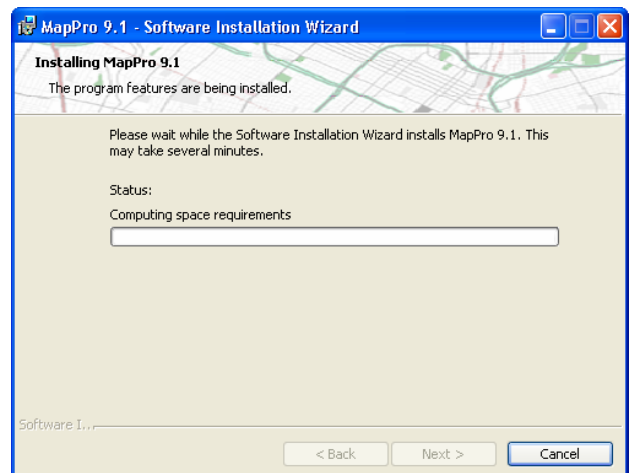
17. Leave the Destination Folder set to the default **C:\MapPro** and click 



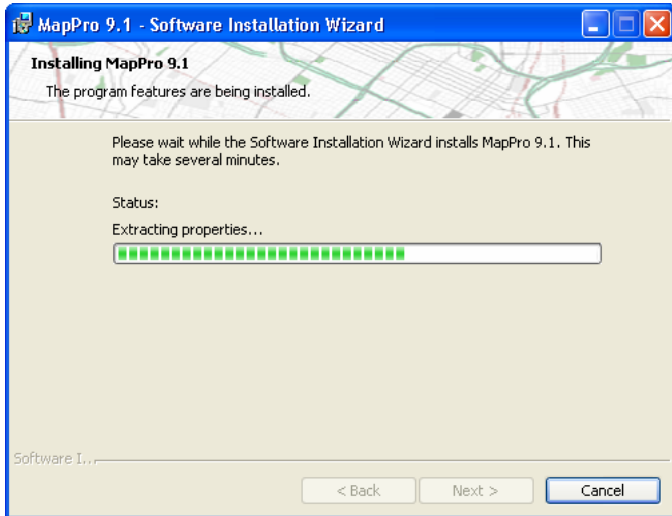
18. Click 




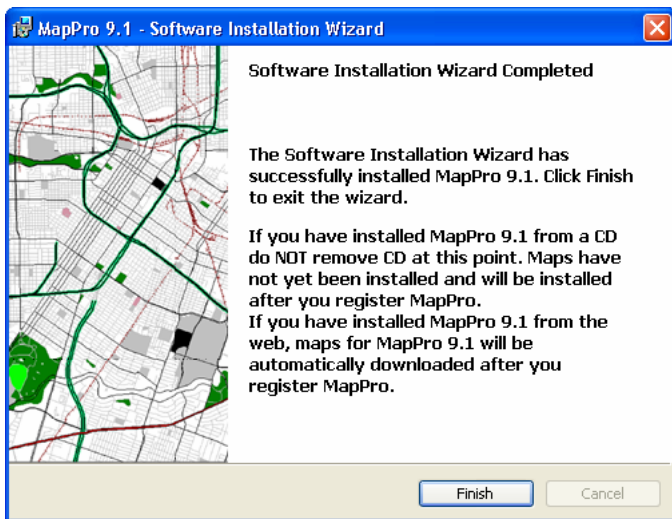
19. The installation will proceed...



20. And continue...



21. When complete, click 



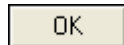
● UPDATE MAPPRO


NOTE: If you receive an error message during the following steps, close MapPro and try the steps again.

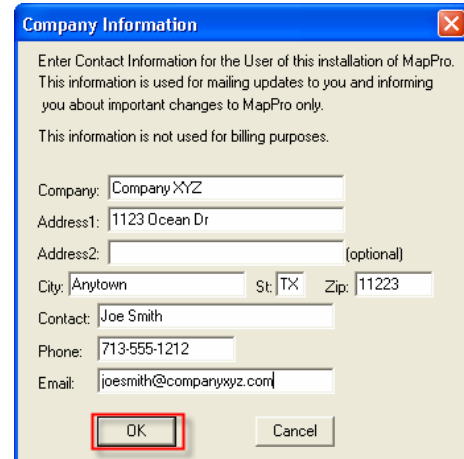
22. On the desktop, double-click on the **MapPro** globe icon



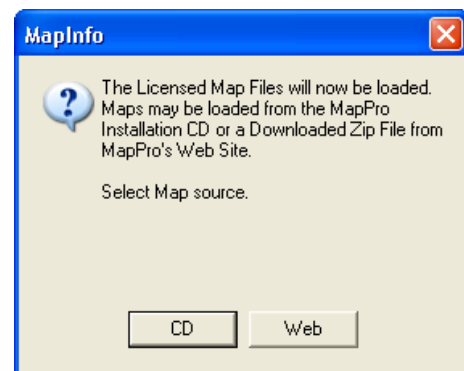
23. Your serial number should already be entered so click



24. THIS STEP FOR NEW INSTALLS ONLY – On the **Company Information** window, enter the USER specific information then click 

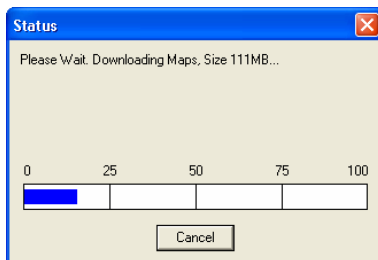


25. Depending on how your previous maps were installed (except for new installs), you may get several different prompts. Simply follow the prompts to download the maps from the **Web** (unless you have been specifically instructed to download from a CD). This process may take several minutes so be patient.



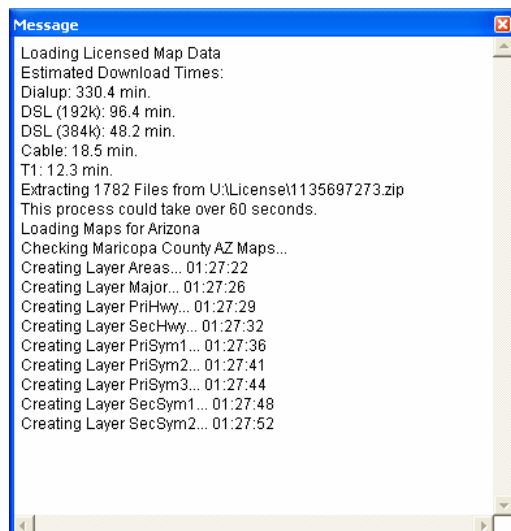
26. If you receive a message that it could not connect to the internet OR if your firewall software wants to know whether to allow or block access for the program, you should allow the program access. Once a message like this is received, it is best to Cancel the download process, close MapPro, start MapPro and try again. If needed, start MapPro and at the top select **Setup>Reload Licensed Maps**

27. Unless you work with properties that cross state lines, it is recommended to select **NO** to combine maps across state lines

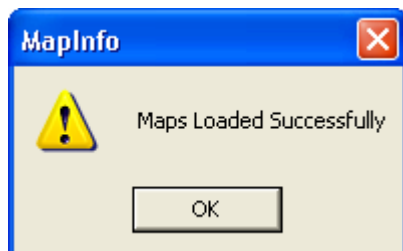
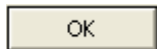


28. A **Status** window will appear during the download process, which may go from 0-100 several times.


29. When the download portion of the map process is complete, the map files will be extracted (you may see some activity in the small **Message** window). This process may take a few minutes

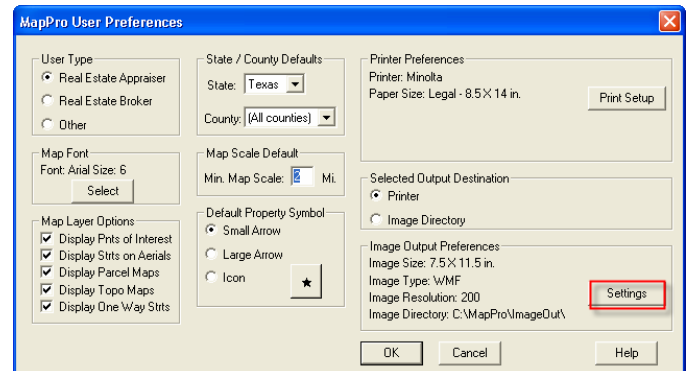



30. When the Maps have been loaded successfully, click



NOTE: ClickFORMS Users ONLY:

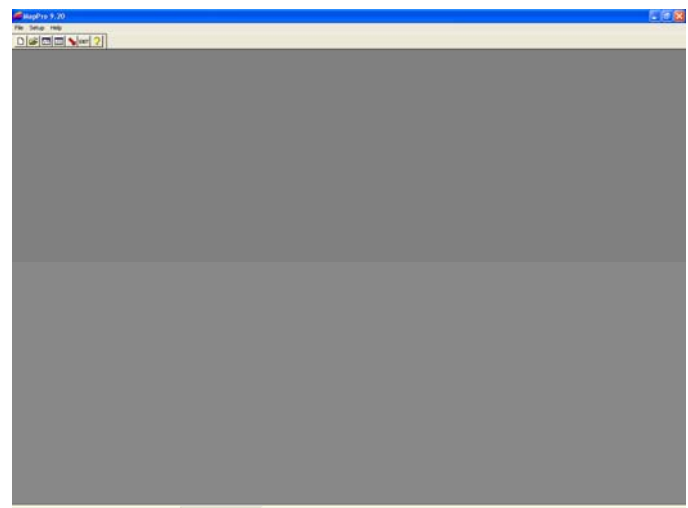
- In the Preferences window, click on the  button
- Change the **Image Type** to **JPEG**
- Click **OK**
- Click **OK** on the Preferences window
- Click **OK** to save to the Preferences File



31. Click  on the **Preferences** window (no need to make any changes)

32. Close MapPro

33. To make sure everything is OK, start MapPro again and you should NOT receive any messages. MapPro should simply open to an empty MapPro window.



34. Close MapPro.