


MapPro has the ability to display addresses from a database and even select addresses within a certain distance or inside a polygon.

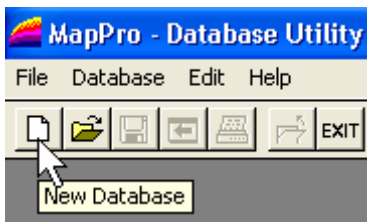
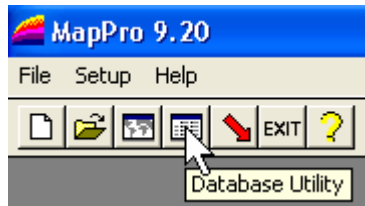
The following instructions show several methods of how to use MapPro with databases:

● SETUP A DATABASE

1. Make sure you do not have any appraisal software running. Go to the desktop and double click on the **MapPro** globe icon.

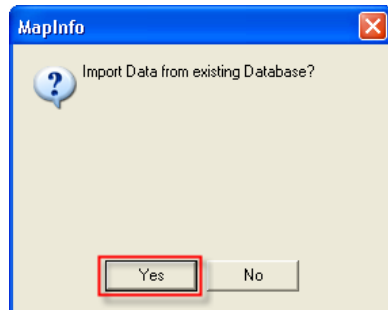


2. On the toolbar, click on the 4th icon , **Database Utility**.



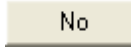
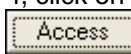

3. Click on the 1st icon , **New Database**.

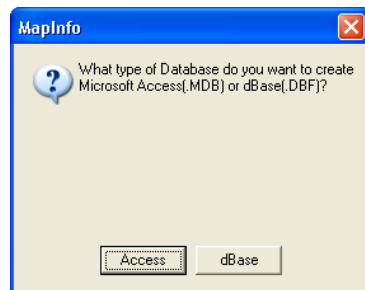
4. If you have your own database file of addresses you would like to import, click YES, otherwise, click NO.



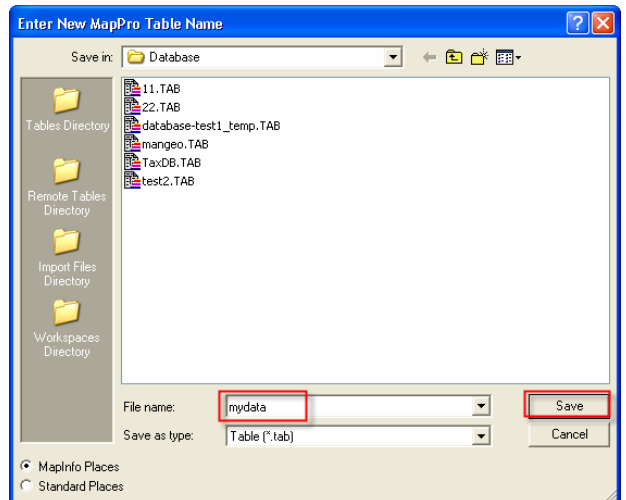
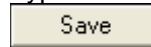
NOTE: For , proceed to **Step 11**.

● NO EXISTING DATABASE


5. If you clicked on  in step 4, click on  or  for your new file format (**dBase** recommended to start with).

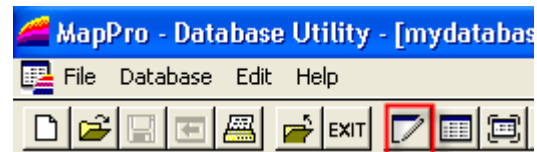



6. Type in a name for the **File name** field then click

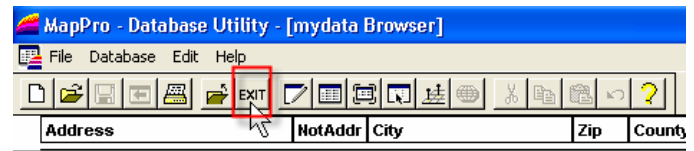


7. You now have an empty database file that has the necessary fields.

8. To add a new address, on the toolbar, click on  **New Record** and enter an address.



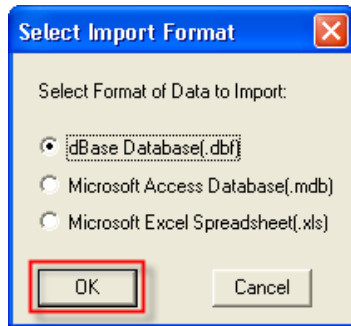
9. When you are finished with the database, on the toolbar, click on  to close the database utility.



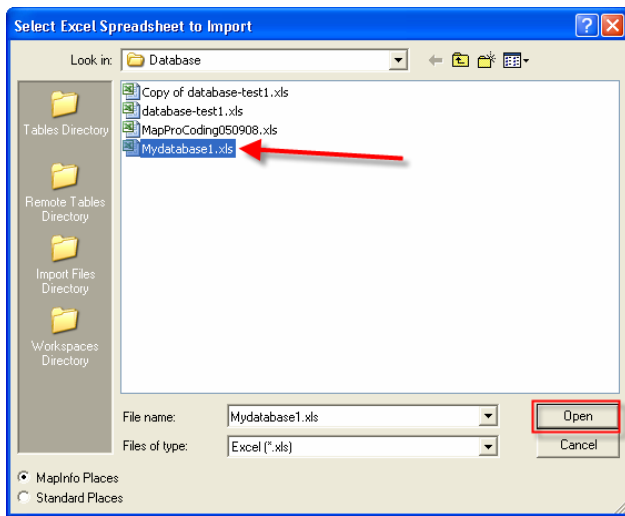
10. If you are NOT importing your own database file, skip to **Step 17** to continue.

● YES – IMPORT EXISTING DATABASE

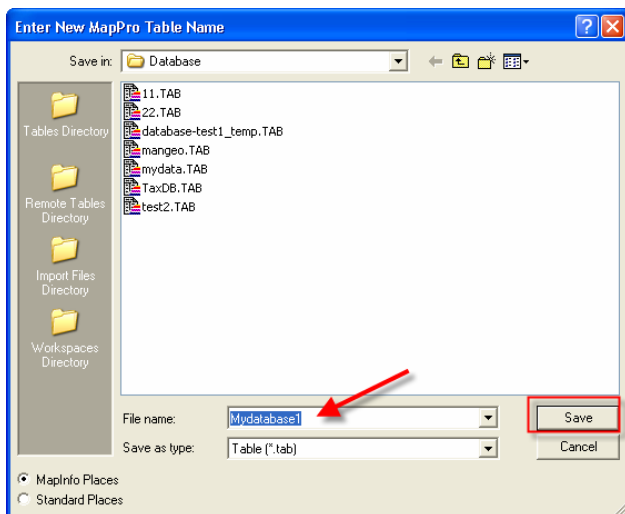
11. If you selected **Yes** in step 4 to import an existing database file, select which format your existing file is (.dbf .mdb .xls) then click **OK**.



12. Browse to where your database file is located, select the file then click on **Open**.

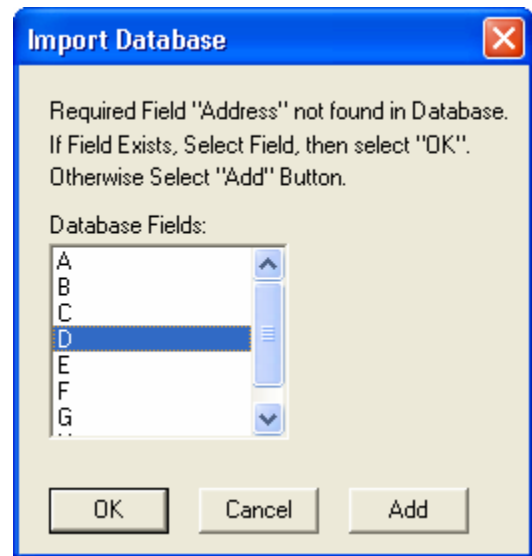


13. MapPro will make a table (TAB file) from the data in your database file. You can leave the name the same as your database file and click on **Save**.



14. There are certain fields that MapPro requires, like Address, Zip, etc.. When MapPro reads your database and does not find these required fields, you may be prompted to select the correct column for each required field.

15. In this example, MapPro is asking which specific column in YOUR database is used for the ADDRESS field. Simply select the correct column and click **OK**. If YOUR database does NOT include that specific field, simply click **Add** and MapPro will add that empty column to the .TAB database file.



16. When all required fields have been mapped or added, your new database table (.TAB file) will be displayed.

Name	Description	Address	Zip	Count	Is	Database	City	County
411	41111	41111	41111	41111	41111	41111	41111	41111
412	41211	41211	41211	41211	41211	41211	41211	41211
413	41311	41311	41311	41311	41311	41311	41311	41311
414	41411	41411	41411	41411	41411	41411	41411	41411
415	41511	41511	41511	41511	41511	41511	41511	41511
416	41611	41611	41611	41611	41611	41611	41611	41611
417	41711	41711	41711	41711	41711	41711	41711	41711
418	41811	41811	41811	41811	41811	41811	41811	41811
419	41911	41911	41911	41911	41911	41911	41911	41911
420	42011	42011	42011	42011	42011	42011	42011	42011
421	42111	42111	42111	42111	42111	42111	42111	42111
422	42211	42211	42211	42211	42211	42211	42211	42211
423	42311	42311	42311	42311	42311	42311	42311	42311
424	42411	42411	42411	42411	42411	42411	42411	42411
425	42511	42511	42511	42511	42511	42511	42511	42511
426	42611	42611	42611	42611	42611	42611	42611	42611
427	42711	42711	42711	42711	42711	42711	42711	42711
428	42811	42811	42811	42811	42811	42811	42811	42811
429	42911	42911	42911	42911	42911	42911	42911	42911
430	43011	43011	43011	43011	43011	43011	43011	43011
431	43111	43111	43111	43111	43111	43111	43111	43111
432	43211	43211	43211	43211	43211	43211	43211	43211
433	43311	43311	43311	43311	43311	43311	43311	43311
434	43411	43411	43411	43411	43411	43411	43411	43411
435	43511	43511	43511	43511	43511	43511	43511	43511
436	43611	43611	43611	43611	43611	43611	43611	43611
437	43711	43711	43711	43711	43711	43711	43711	43711
438	43811	43811	43811	43811	43811	43811	43811	43811
439	43911	43911	43911	43911	43911	43911	43911	43911
440	44011	44011	44011	44011	44011	44011	44011	44011
441	44111	44111	44111	44111	44111	44111	44111	44111
442	44211	44211	44211	44211	44211	44211	44211	44211
443	44311	44311	44311	44311	44311	44311	44311	44311
444	44411	44411	44411	44411	44411	44411	44411	44411
445	44511	44511	44511	44511	44511	44511	44511	44511
446	44611	44611	44611	44611	44611	44611	44611	44611
447	44711	44711	44711	44711	44711	44711	44711	44711
448	44811	44811	44811	44811	44811	44811	44811	44811
449	44911	44911	44911	44911	44911	44911	44911	44911
450	45011	45011	45011	45011	45011	45011	45011	45011
451	45111	45111	45111	45111	45111	45111	45111	45111
452	45211	45211	45211	45211	45211	45211	45211	45211
453	45311	45311	45311	45311	45311	45311	45311	45311
454	45411	45411	45411	45411	45411	45411	45411	45411
455	45511	45511	45511	45511	45511	45511	45511	45511
456	45611	45611	45611	45611	45611	45611	45611	45611
457	45711	45711	45711	45711	45711	45711	45711	45711
458	45811	45811	45811	45811	45811	45811	45811	45811
459	45911	45911	45911	45911	45911	45911	45911	45911
460	46011	46011	46011	46011	46011	46011	46011	46011
461	46111	46111	46111	46111	46111	46111	46111	46111
462	46211	46211	46211	46211	46211	46211	46211	46211
463	46311	46311	46311	46311	46311	46311	46311	46311
464	46411	46411	46411	46411	46411	46411	46411	46411
465	46511	46511	46511	46511	46511	46511	46511	46511
466	46611	46611	46611	46611	46611	46611	46611	46611
467	46711	46711	46711	46711	46711	46711	46711	46711
468	46811	46811	46811	46811	46811	46811	46811	46811
469	46911	46911	46911	46911	46911	46911	46911	46911
470	47011	47011	47011	47011	47011	47011	47011	47011
471	47111	47111	47111	47111	47111	47111	47111	47111
472	47211	47211	47211	47211	47211	47211	47211	47211
473	47311	47311	47311	47311	47311	47311	47311	47311
474	47411	47411	47411	47411	47411	47411	47411	47411
475	47511	47511	47511	47511	47511	47511	47511	47511
476	47611	47611	47611	47611	47611	47611	47611	47611
477	47711	47711	47711	47711	47711	47711	47711	47711
478	47811	47811	47811	47811	47811	47811	47811	47811
479	47911	47911	47911	47911	47911	47911	47911	47911
480	48011	48011	48011	48011	48011	48011	48011	48011
481	48111	48111	48111	48111	48111	48111	48111	48111
482	48211	48211	48211	48211	48211	48211	48211	48211
483	48311	48311	48311	48311	48311	48311	48311	48311
484	48411	48411	48411	48411	48411	48411	48411	48411
485	48511	48511	48511	48511	48511	48511	48511	48511
486	48611	48611	48611	48611	48611	48611	48611	48611
487	48711	48711	48711	48711	48711	48711	48711	48711
488	48811	48811	48811	48811	48811	48811	48811	48811
489	48911	48911	48911	48911	48911	48911	48911	48911
490	49011	49011	49011	49011	49011	49011	49011	49011
491	49111	49111	49111	49111	49111	49111	49111	49111
492	49211	49211	49211	49211	49211	49211	49211	49211
493	49311	49311	49311	49311	49311	49311	49311	49311
494	49411	49411	49411	49411	49411	49411	49411	49411
495	49511	49511	49511	49511	49511	49511	49511	49511
496	49611	49611	49611	49611	49611	49611	49611	49611
497	49711	49711	49711	49711	49711	49711	49711	49711
498	49811	49811	49811	49811	49811	49811	49811	49811
499	49911	49911	49911	49911	49911	49911	49911	49911
500	50011	50011	50011	50011	50011	50011	50011	50011

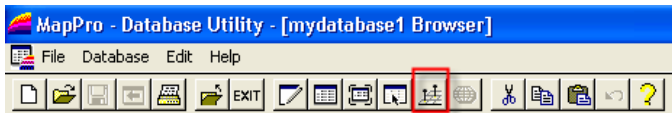
NOTE: If your original database file is DBF or MDB AND in the **MapProDatabase** folder when you import, it will be linked to the MapPro TAB file. Anything you modify in the MapPro table will be modified in your original DBF or MDB file.

● GEOCODE DATABASE

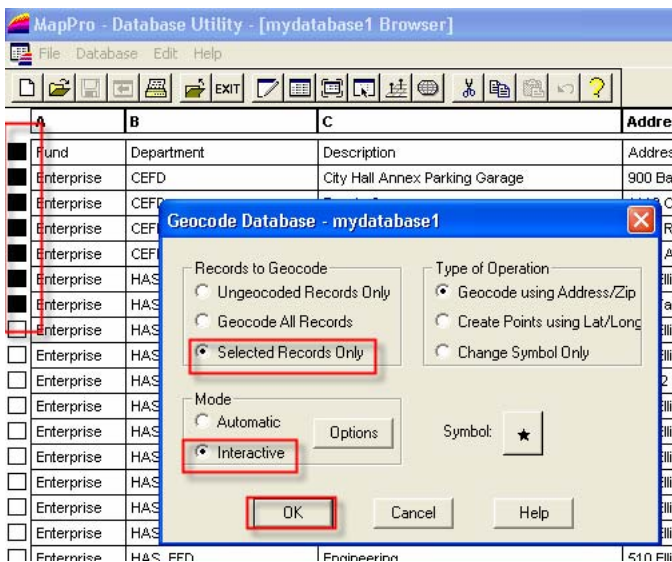
Now that your database records are open in MapPro, we need to geocode the addresses (add latitude and longitude) so they can be displayed on a map.

17. Use your mouse and in the 1st column, select the first 5 or 10 records

18. On the toolbar, click on  **Geocode Database**



19. Choose **Selected Records Only**, and **Interactive Mode**, then click 



20. MapPro will try to geocode the selected records (you may see the Advanced Search window or similar during this process. You can even manually place the address on the map if MapPro is unable to geocode).


21. Once you have a few geocoded addresses (lats and longs), you can Exit the Database Utility by going to the toolbar

Latitude	Longitude
0.000000	0.000000
29.760774	-95.369709
29.753203	-95.366298
29.760573	-95.347601

and selecting 

● CREATE MAP

Let's start a new map so we can display our geocoded addresses.

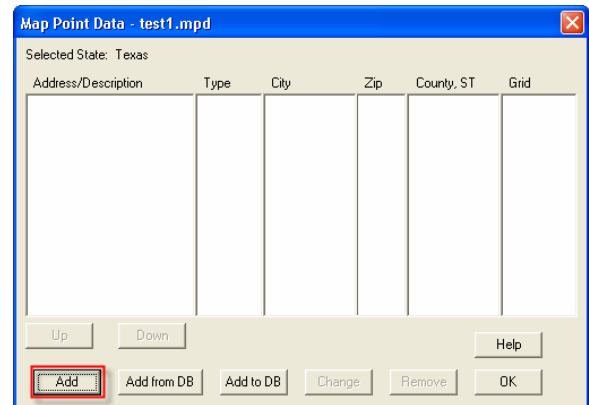
22. On the toolbar, click  on the 1st icon **New Map File**

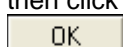


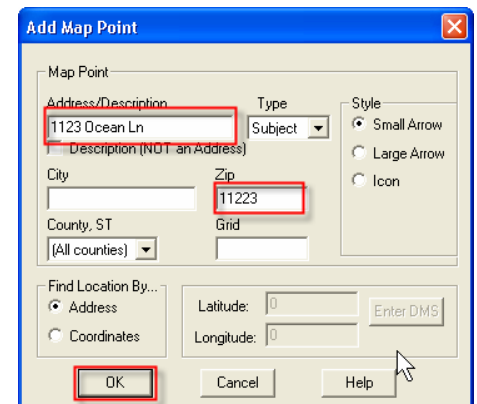
23. Give your file a name and click 


For this example let's enter a subject address then find all addresses from the database that are within a 1 mile radius of the subject.


24. On the **Map Point Data** window, click on 

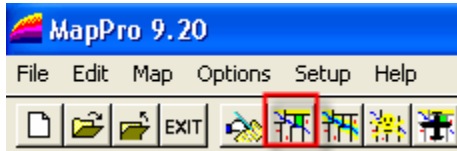


25. Enter your subject address then click 



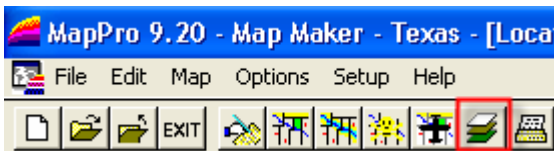
26. With the one address in our **Map Point Data** window, Click 

27. On the toolbar, click on  **Location Map**.

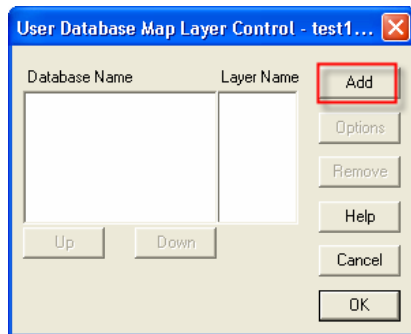


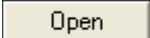
With the Subject arrow visible, let's add the addresses from the new database file.

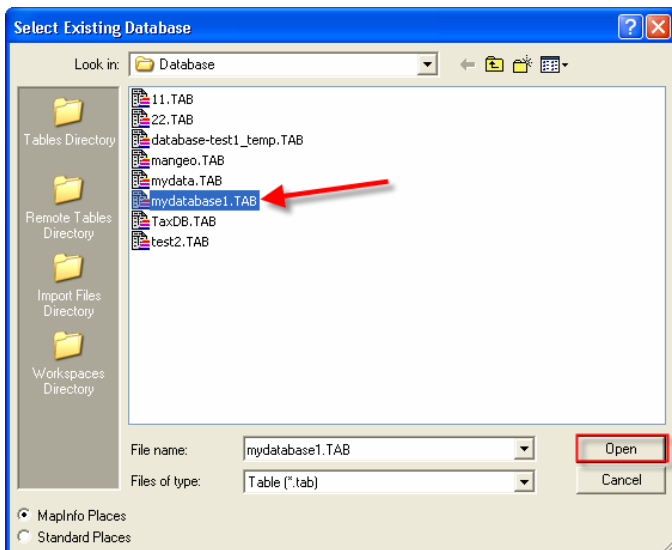
28. On the toolbar, click on  **Use Database Layer**.




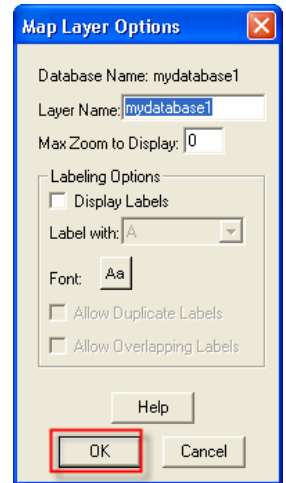
29. Click 



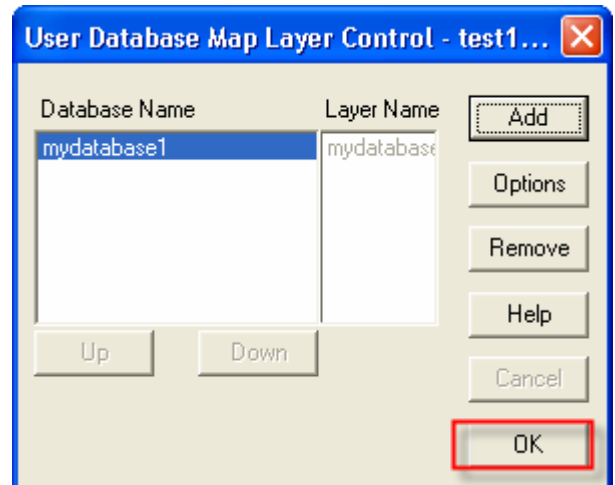
30. Select your new database TAB file and click 




31. You can change settings later. For now, just leave everything as is and click 



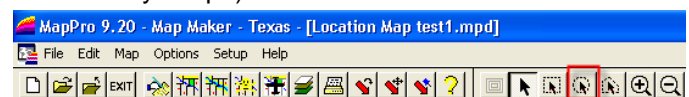
32. Your database name will be displayed in the Layer window.



33. Click  to close the Layer Control window. MapPro will redraw the map with your Subject address arrow AND your geocoded addresses (which will show up as a ★ symbol by default, which can be changed).

If there are any geocoded addresses close to your subject, you will see their symbols. Now let's narrow the field down to the addresses within a 1 mile radius.

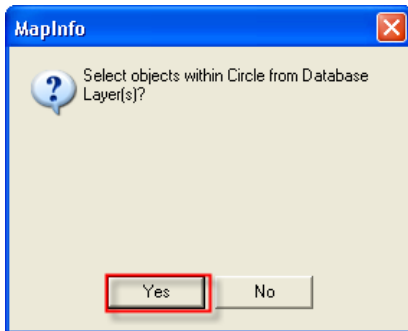
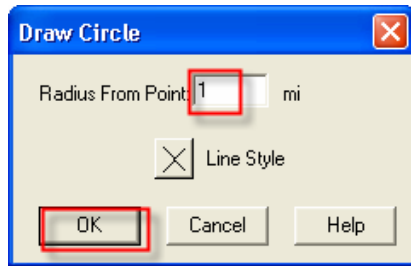
34. On the toolbar, click on  **Draw Circle** (you could use any shape)



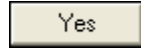
35. Your cursor will be a small hand. Click your mouse on the tip of the subject arrow



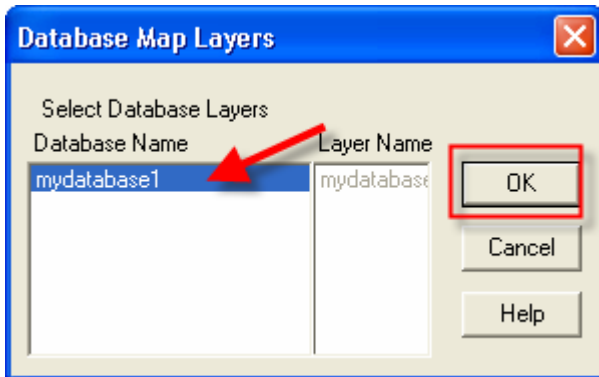
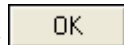
36. Type is a Radius of 1 mile and click



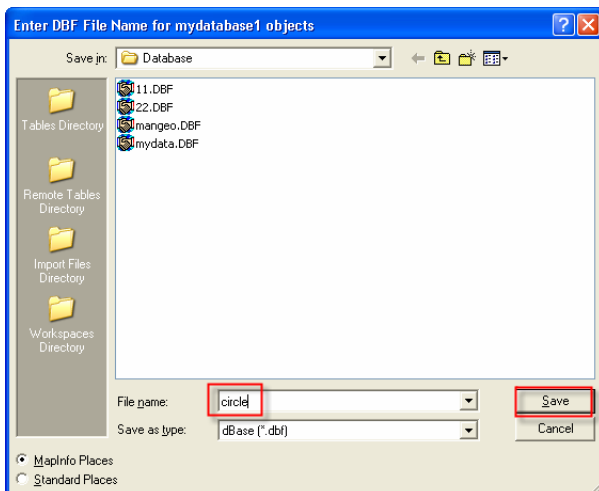
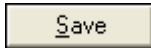
37. For this example, we can even save the addresses within the circle to a separate file so click



38. Select the database layer and click



39. The addresses within the circle will be saved to a DBF file. Give the file a name and click



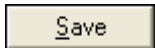
● SELECTING ADDRESSES FROM DATABASE

If you would like to select specific addresses from a database table:

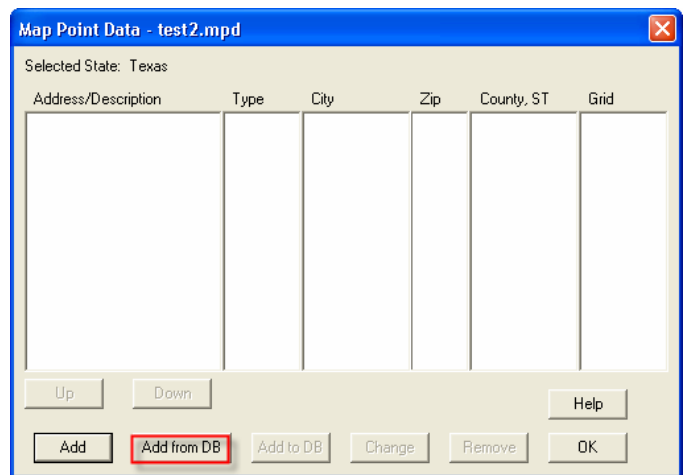
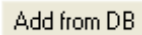
40. Start MapPro

41. On the toolbar, click the 1st icon **New Map File**

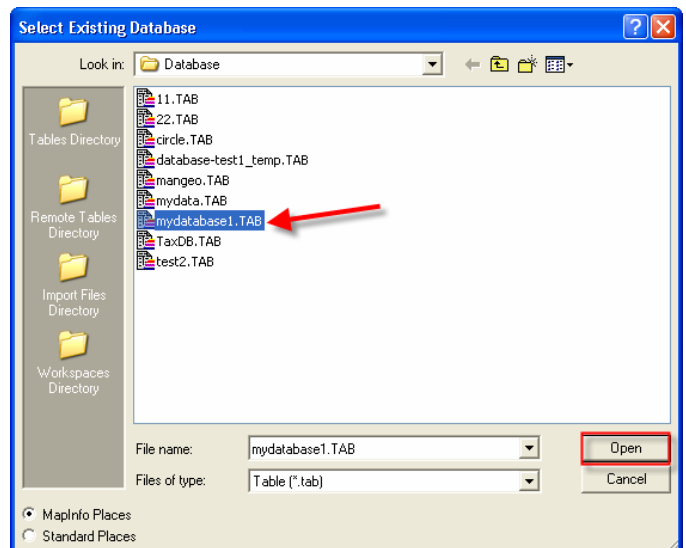
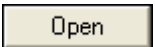
42. Give your file a name and click



43. On the Map Point Data window, click on

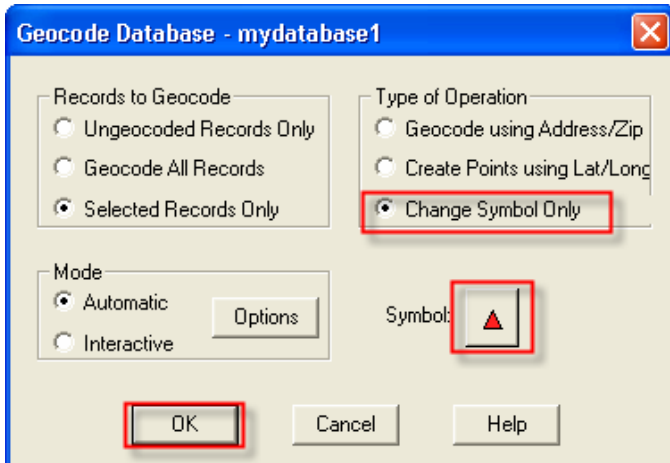


44. Select your database TAB file and click



53. You will see the new symbol in the Geocode window. Select **Change Symbol Only** then click

OK



54. MapPro will apply the changes to the selected records. Click

OK

